

Andover
Fabrics™

Early American Tinware

presented by Andover Fabrics and the American Folk Art Museum



Andover Fabrics
462 Seventh Ave.
New York, NY 10018
1.800.223.5678
www.andoverfabrics.com

Quilt finishes to 47" x 47"

AMERICAN
FOLK ART
MUSEUM

Early American Tinware Quilt

From Andover Fabrics and the American Folk Art Museum



Andover Fabrics with the American Folk Art Museum presents Early American Tinware Patterns by Bob VanOsten. These fabrics were inspired by the Museum's collection of tinware which was produced from 1798 to 1860 in shops around New England.

Andover strives to bring you the finest quality cotton fabrics with today's quilter in mind. Ask for Andover Fabrics at your local independent quilt shop or fine fabric store!



Quilt finishes to 47" x 47"
Quilt designed by Jane Townswick
Quilt made by Gail Kessler
Quilted by Janice Petre

Recommended for intermediate quilters

FABRIC REQUIREMENTS:

- 2445-K Large Motif Print – 1 1/2 yds
- 2452-K Border Print – 2 7/8 yds
- 2446-K Print backing – 3 yds
- 2448-L Beige Background – 1/2 yd
- 2448-R Red – Fat Quarter or 1/4 yd
- 2449-G Green – Fat Quarter or 1/4 yd
- 2449-R Red – Fat Quarter or 1/4 yd
- 2449-Y Yellow – 3" Square

CUTTING DIRECTIONS:

- ♦ Large center block – Cut beige print 2448-L 16 1/2" square. Trim to 15 3/4" square after appliqué. Finished size of square is 15 1/4".
- ♦ Center block borders – cut four 22" x 2 7/8" strips centered along border print 2452-K as shown in picture of quilt. Miter corners.
- ♦ Small blocks- Cut 12 blocks 8 1/2" from Large Motif Print 2445-K using quilt picture as placement guide. Be sure to carefully center motifs on your blocks. Blocks will finish to 8".
- ♦ Sashing Strips – Cut twelve strips 2" x 8 1/2" from cable print of 2452-K as shown in quilt picture. Strips will finish to 1 1/2" x 8".
- ♦ Outer Border – Cut four strips 6" x 51" from 2452 K using quilt picture as placement guide. Border will finish to 5 1/2" x 47".

*Andover
Fabrics™*

462 Seventh Ave.
New York, NY 10018
1.800.223.5678

www.andoverfabrics.com

- ♦ Backing – Cut 3 yard piece of 2446-K in half crosswise.
- ♦ Binding – Cut 2" strips centered along cable design of 2452-K.

ASSEMBLY:

1) Using your favorite appliqué technique, make four each of the petals, leaves, and buds of the vine motif. Make one center flower. Arrange the four vine motifs as shown in quilt picture. Place flower motif in center of block as shown in quilt picture.

The quilt in the picture was fused and machine appliquéd. The stem was achieved using a narrow zig-zag stitch.

2) Square up finished appliqué block to 15 3/4". Finished size of block will be 15 1/4".

3) Center block border strips on sides of center block and stitch, mitering corners. Trim excess border fabric from mitered seam. Press seam allowance to one side.

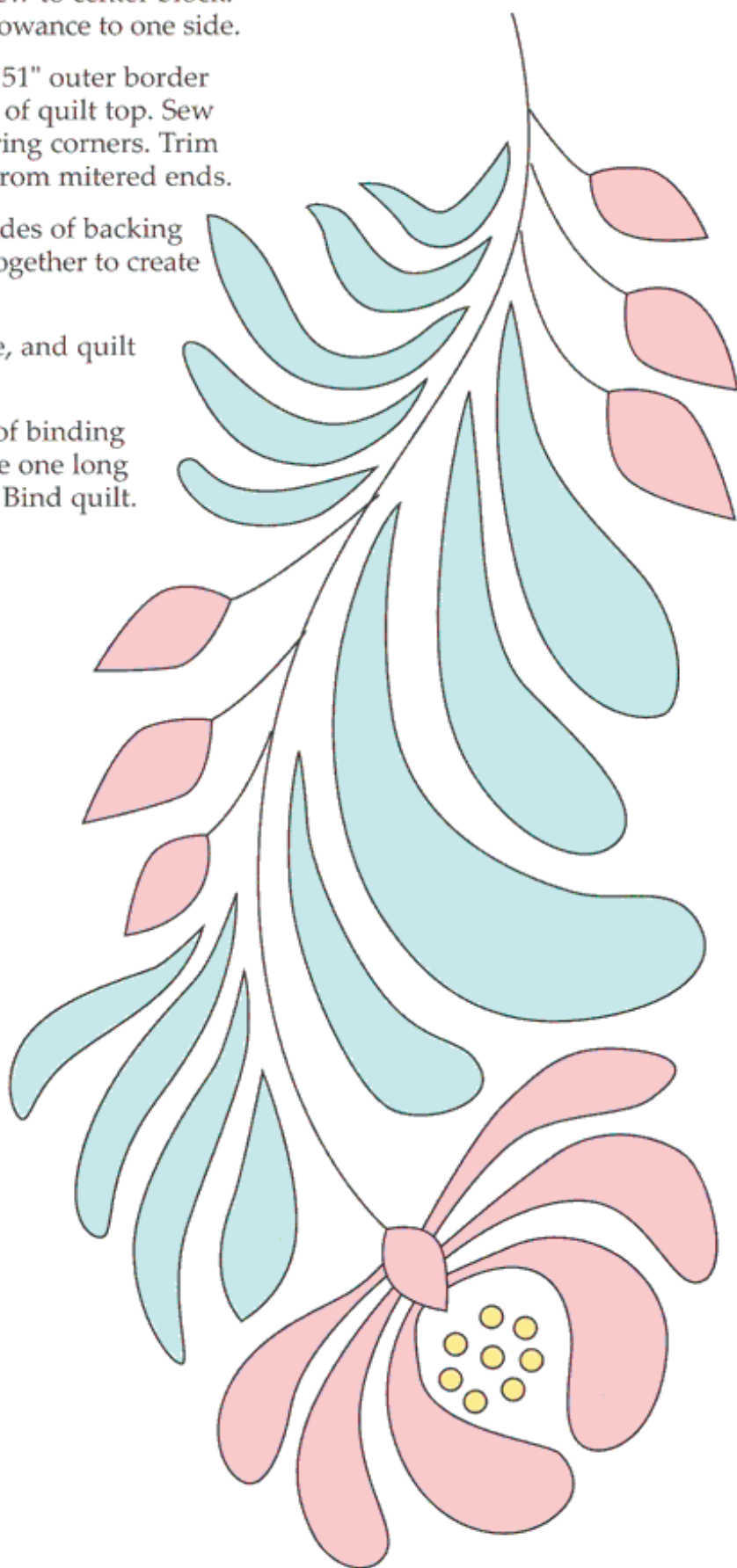
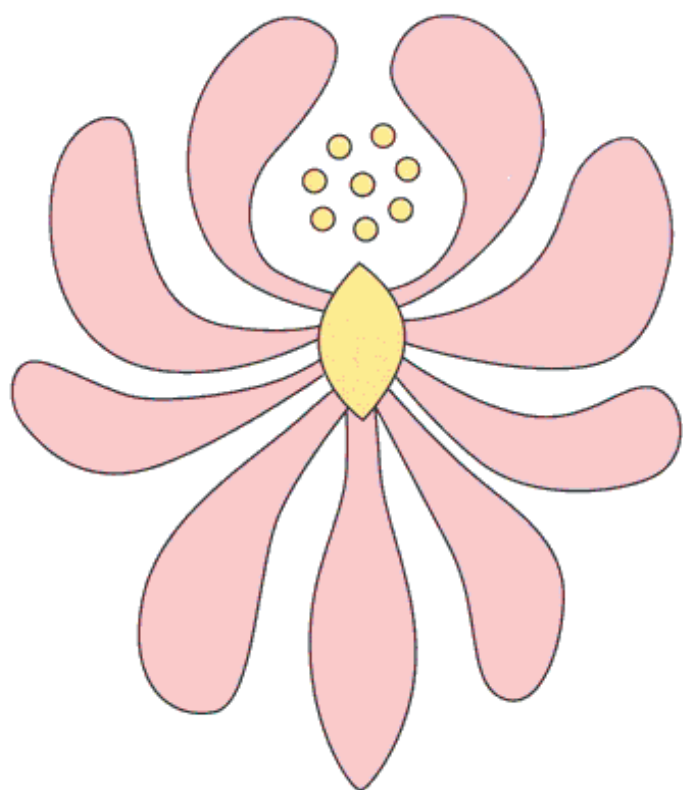
4) Sew 8 1/2" x 2" sashing strips to sides of 8 1/2" motif squares, using quilt picture as placement guide. Then sew to center block. Press seam allowance to one side.

5) Center 6" x 51" outer border strips to sides of quilt top. Sew to sides, mitering corners. Trim excess fabric from mitered ends.

6) Sew long sides of backing fabric pieces together to create quilt back.

7) Layer, baste, and quilt as desired.

8) Sew strips of binding fabric to create one long binding strip. Bind quilt.



Early American Tinware

Fabrics designed by Bob VanOsten

462 Seventh Ave. • New York, NY 10018 • 1.800.223.5678 • www.andoverfabrics.com



2445-G



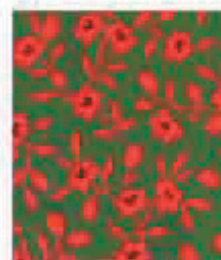
2446-G



2446-K



2446-P



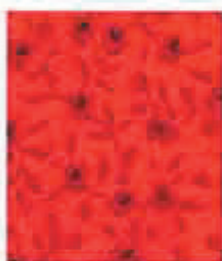
2448-G



2448-V



2445-K



2448-R



2448-L



2448-P



2449-V



2449-Y



2449-G



2449-R



2450-G



2445-P



2450-K



2450-P



2452-G



2452-K



2452-P